

I'M FAIRLY CERTAIN THAT IF YOU PURCHASED THIS KIT, YOU HAVE SOME EXPERIENCE WITH BUILDING RESIN MODELS. BUT, JUST IN CASE YOU ARE NEW TO THE HOBBY, HERE ARE SOME TIPS TO GIVE YOU THE BEST RESULTS.

THE FIRST THING TO DO IS TO CLEAN YOUR KIT THOROUGHLY BEFORE PAINTING. WE RECOMMEND SPRAYING ALL PARTS WITH A DEGREASER AND THEN WASH THEM IN WARM SOAPY WATER. THIS WILL ENSURE THAT ANY RESIDUAL MOLD RELEASE HAS BEEN REMOVED FROM THE KIT.

MOST OF THE PARTS IN THE KIT ARE KEYED AND SHOULD FIT TOGETHER NICELY BUT THERE MAY NEED TO BE A BIT OF PUTTYING AT SOME JOINTS.

WE HAVE DESIGNED THE KIT WITH KEYS BUT YOU MAY WANT TO PIN ANY PARTS TOGETHER THAT MIGHT BE HEAVY OR SUSCEPTIBLE TO BREAKAGE. YOU MAY ALSO USE MAGNETS TO PARTS AND SECURE THE FIGURES TO THE BASE.

WE RECOMMEND YOU USE A CA (CYANOACRYLATE) GLUE THAT YOU CAN FIND AT MOST HOBBY STORES, OR A 2 PART EPOXY AVAILABLE AT MOST HOME IMPROVEMENT STORES.

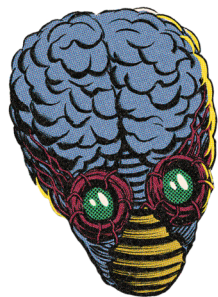
PRIME ALL PARTS PRIOR TO PAINTING. THIS WILL GIVE YOUR PAINT WORK A GOOD BASE TO ADHERE TO. THERE'S NOTHING WORSE THAN SPENDING HOURS ON PAINTING AND WATCH IT PEEL OR FLAKE OFF LATER.

ONE LAST NOTE. YOU WILL NOTICE A HOLE ON THE BACK SIDE OF THE BENCH. THIS KIT IS DESIGNED TO HAVE A LIGHTING OPTION AND THAT HOLE HAS BEEN ADDED FOR YOUR SWITCH INSTALLATION. IF YOU DO NOT WANT TO INSTALL A LIGHT SYSTEM THEN JUST COVER THE HOLE.

BUILDING YOUR KIT

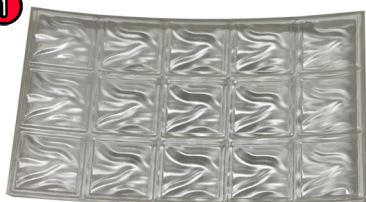


MODELWORX
info@modelworxkits.com



WITNESS THE
ENGINEERING OF
OUR PERFECT SHIP!

1



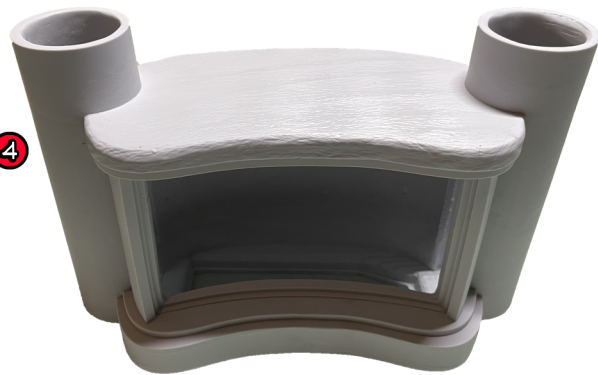
2



3

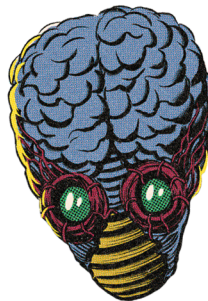


4



- 1: CONTROL SEAT PANEL (CLEAR)
2: COLUMN COVERS (CLEAR)
3: SHIP MAIN BASE
4: CONTROL SEAT

... OUR AMAZING
ARMORED BODIES!



5



6



7



8



- 5: TORSO AND LEGS
6: HEAD
7: CARAPACE
8: ARMS X2

... AND THE
PUNY HUMAN'S ...



9



10



11



12



- 9: TORSO AND LEGS
10: HEAD
11: BELT PIECES X2
12: ARMS X2